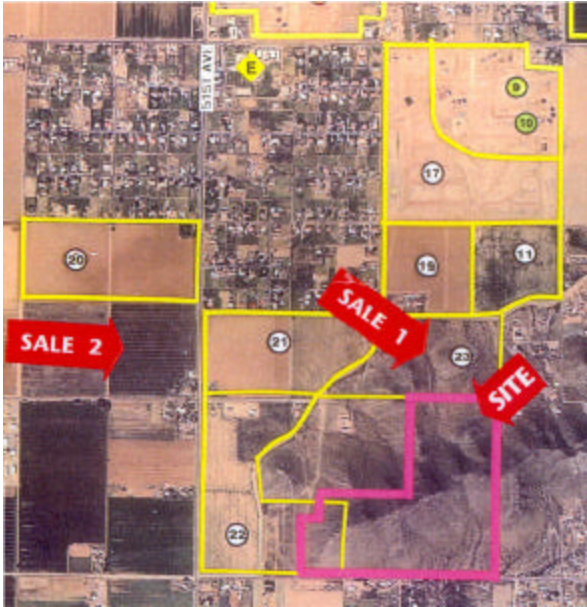


Land Technologies, Inc.
325 E. Southern Ave, Tempe AZ 85282
480.967.4100

Carver Mountain



Offering Summary

Listing Status: Exclusive

Property Type: Commercial Land

Size: +/- 110 acres

Location: Just ¼ mile East of 51st Ave. on North side of Carver Road

County: Maricopa County Island, lies within The City of Phoenix Planning Area

Utilities: Waterline in Carver Road and 51st Ave

Zoning: R1-43 (one house per acre)

Price: \$4,000,000 (\$36,365 per acre)

Terms: All Cash at Close of Escrow

Property Description

One of a Kind Mountain Views! Fronts on Elliot Road Alignment to the North and has excellent access on Carver Road to the South. Carver Mountain Valley provides spectacular late morning sunrises and early afternoon sunsets. This is a very unique community. The land is full of wonderful blooming desert cacti, mountain bluffs and beautiful vistas. Seller is considering all offers. Buyers are invited to visit to Submit. This opportunity won't last long.

Location Description

The subject property is located just ¼ mile East of 51st Ave on North side of Carver Road. It is located on a Maricopa County Island and lies within the City of Phoenix Planning Area

Contact Information

Land Technologies, Inc.

Treg Loyden

Phone: 480-967-4100

The information contained herein has either been given to use by the owner/seller or obtained from sources that we deem reliable. However no warranties or representations, expressed or implied, are made as to the accuracy of the information contained herein, and same is submitted subject to errors, omissions, change of price, rental, or other conditions, withdrawal without notice, and to any special listings conditions, that may be imposed by our principals, contacts, or information sources.

