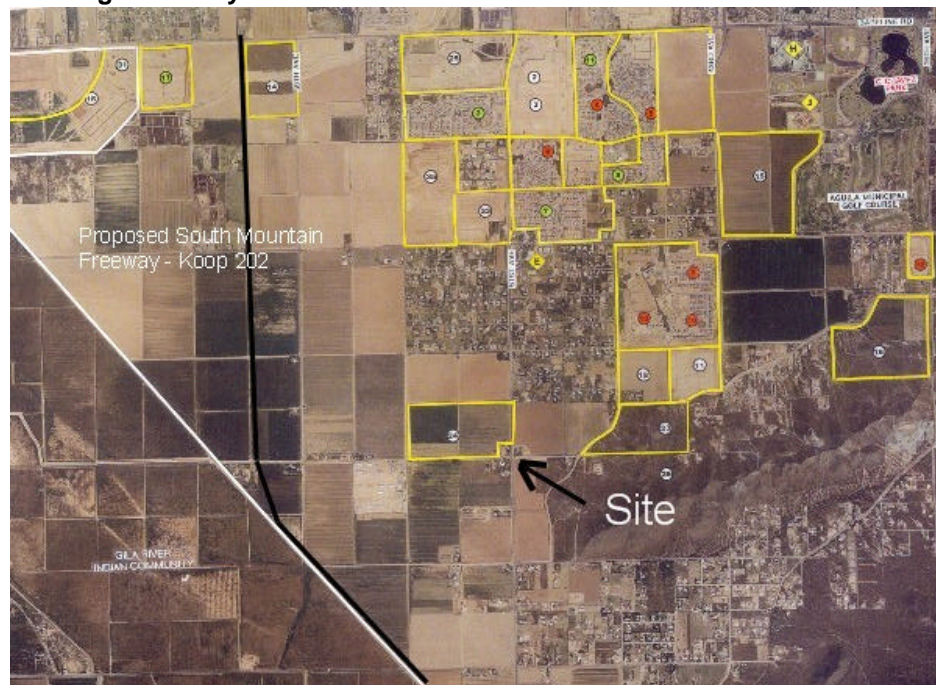


Land Technologies, Inc.
325 E. Southern Ave, Tempe AZ 85282
480.967.4100 office 480.967.0255 fax

Laveen Commercial

Offering Summary



Property Type: Conceptual Commercial. ALTA survey available.

Size: +/- 2 acres

Directions: NWC 51st Ave & Elliot Road

County: Maricopa

Utilities: Power – SRP
Water – City of Phoenix
Sewer – City of Phoenix

Zoning: Sale Subject to commercial final plat approval

Price: \$12 / square foot

Property Description

Flat farmland. ALTA Survey available.

Location Description

NWC 51st Ave & Elliot Road in the Laveen area of Phoenix, AZ

Contact Information

Exclusively listed by Land Technologies, Inc.

Treg Loyden, Broker/Owner

Fax: 480-967.0255

Phone: 480-967-4100

The information contained herein has either been given to use by the owner/seller or obtained from sources that we deem reliable. However no warranties or representations, expressed or implied, are made as to the accuracy of the information contained herein, and same is submitted subject to errors, omissions, change of price, rental, or other conditions, withdrawal without notice, and to any special listings conditions, that may be imposed by our principals, contacts, or information sources.